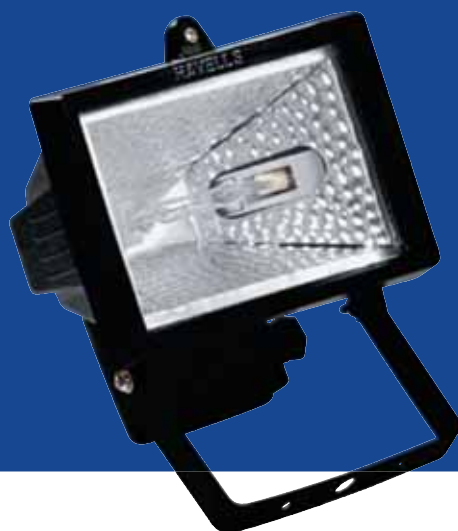


Luminaire Family	Page No	No. of Lamps	Lamp option										Optic Option				Control Gear Option		Wattage Option				IP	
AREA LIGHTING			HPW/	HPSV		HPMH						Halogen	SN	SW	AW	DAW	Integral	Non-Integral	70W to 150W	250W	150W to 400W	1000W		
				E	T	MV Based	SV Based	MH-DE	MH-SEQ	G12	O	O												O
JETA MINI	F-01	1																						55
JETA 1	F-02	1																						55
JETA 2	F-03	1																						55
JETA 3 NEW	F-04	1																						65
JETA 4	F-05	1																						65
JETA 6 RO	F-06	1																						66
JETA 6 NEW	F-07	1																						65
JETA 7	F-08	1																						65
RANGER 1 NEW NI	F-09	1																						65
RANGER 2 NI	F-10	2																						65
ALFA 3 NI	F-11	1																						65
ALFA 2 New NI	F-12	1																						65
ALFA 2 NI	F-13	1																						65
FOCAL 1 INT	F-14	1																						65
FOCAL 2 INT	F-15	1																						65

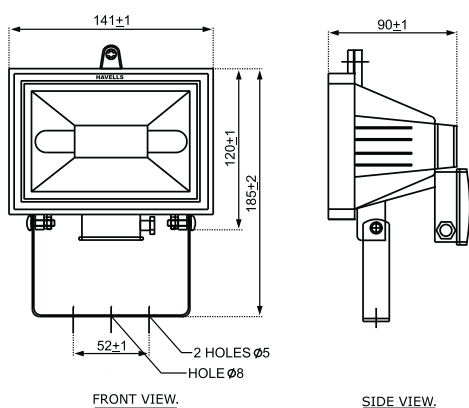
SN: Symmetrical Narrow Beam  
 SW: Symmetrical Wide Beam  
 AW: Assymetrical Wide Beam  
 DAW: Double Assymetrical Wide Beam

## Jeta Mini



Mini flood light  
luminaire suitable  
for 150W Tungsten  
Halogen double  
ended lamp.

## Dimensions (in mm)



## Specification

## Housing

Pressure die-cast aluminium alloy LM24 in IP55 protection.

## Cover

Tempered protective toughened glass, 5mm thick, thermal shock and impact resistant.

## Finish

Epoxy black powder coated after phosphochromate treatment.

## Optics

Symmetrical reflector is made of high purity pre-anodised dimpled aluminium sheet.

## Lamp Holder

In ceramics with silver plated contacts.

## Mounting

Surface mounting using built in MS powder coated bracket.

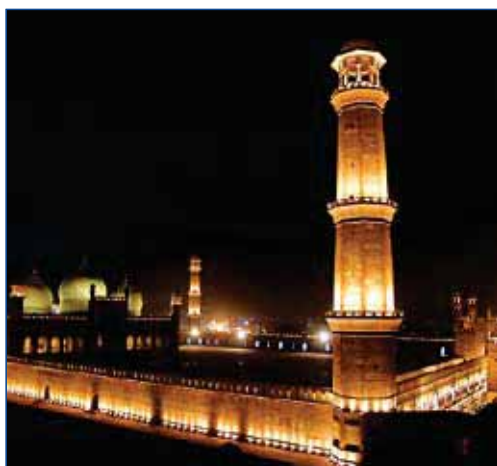
## Applications

Bill boards  
Shop boards  
House functions  
Garden & Parks

## Technical Details

Ordering Code*	Lamp Type	Nominal Voltage (V)	Mains Current (A)	Lamp Socket	Power Factor
LHFFH05115099	1x150W T.H.	240	0.625	Rx7s	1.0

\* Supplied with 150W linear halogen lamp.

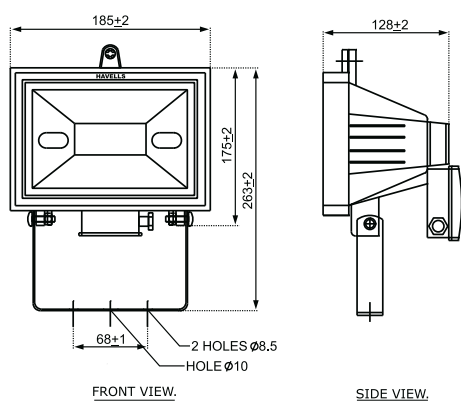


## Jeta 1



Flood light luminaire suitable for 500W Tungsten Halogen/ 70W Metal Halide double ended lamp.

## Dimensions (in mm)



## Specification

## Housing

Pressure die cast aluminium alloy LM24 in IP55 protection.

## Cover

Tempered protective glass, 5mm thick, thermal shock & impact resistant.

## Finish

Epoxy powder coated black after phosphochromate treatment.

## Optics

Reflectors made of high purity pre anodised dimpled aluminium sheet.

## Lamp holder

In ceramics & silver plated contacts.

## Electric gear

Use appropriate control gear, when luminaire used with 70W High Pressure Metal Halide double ended lamp.

## Mounting

Wall/ surface mounting using bracket.

## Applications

Sign boards  
Emergency areas  
Construction sites  
Pedestrian crossings

## Technical Details

Ordering Code	Lamp Type	Nominal Voltage (V)	Mains Current (A)	Lamp Socket	Power factor
LHFH05150099	1x500W T.H.	240	2.08	Rx7s	1.0

\* Also suitable for 70W MH DE lamp, use appropriate control gear, order separately.

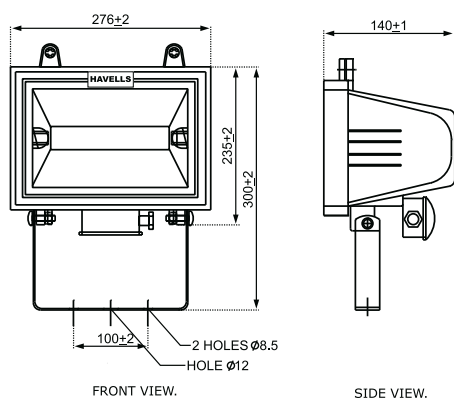


## Jeta 2



Flood light luminaire suitable for 1000W Tungsten Halogen lamp.

## Dimensions (in mm)



## Specification

## Housing

Pressure die cast aluminium alloy LM24 in IP 55 protection.

## Cover

Tempered protective toughened glass, 5mm thick, thermal shock & impact resistant.

## Finish

Epoxy powder coated black after phosphochromate treatment.

## Optics

Reflectors made of high purity pre anodised aluminium dimpled sheet.

## Lamp holder

In ceramics & silver plated contacts.

## Electric gear

Luminaire to be used with 150W MH DE lamp, holder position needs adjustment. Use appropriate control gear for reliable ignition.

## Mounting

Wall/surface mounting using bracket.

## Applications

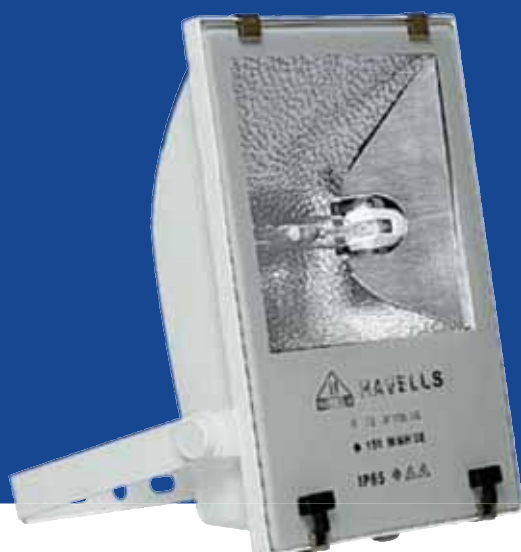
Sign boards  
Sports arena  
Construction sites  
Buildings & monument

## Technical Details

Ordering Code	Lamp Type	Nominal Voltage (V)	Mains Current (A)	Lamp Socket	Power Factor
LHPH05110099	1x1000W T.H.	240	4.16	Rx7s	1.0



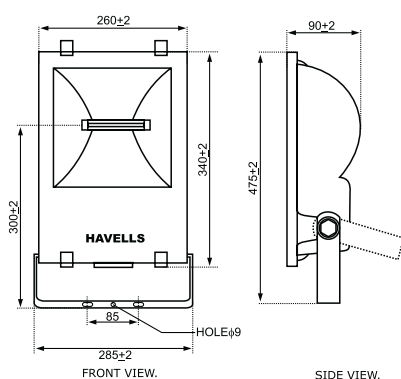
## Jeta 3 New



Integral wide beam flood light luminaire suitable for 70/150W High Pressure Metal Halide double ended lamp.

## Dimensions (in mm)

## Dimensions (in mm)



## Specification

## Housing

Pressure die-cast aluminium alloy LM24 with IP65 protection.

## Cover

Tempered protective toughened front glass, 5mm thick, thermal shock and impact resistant, fixed with quick release hinge-clips for in-position lamp replacement.

## Finish

Epoxy grey powder coated after phosphochromate treatment.

## Optics

Reflectors made of high purity dimpled pre-anodised aluminium sheet for wide beam. Available in Assymmetric version.

## Lamp Holder

In ceramics with silver plated contacts.

## Electric Gear

Pre wired with power factor improvement capacitor and super imposed ignitor for reliable ignition upto terminal block, copper wound ferromagnetic ballast supplied separately be wired as per instruction.

## Mounting

Surface mounting using built in heavy duty bracket.

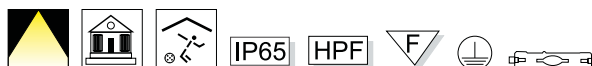
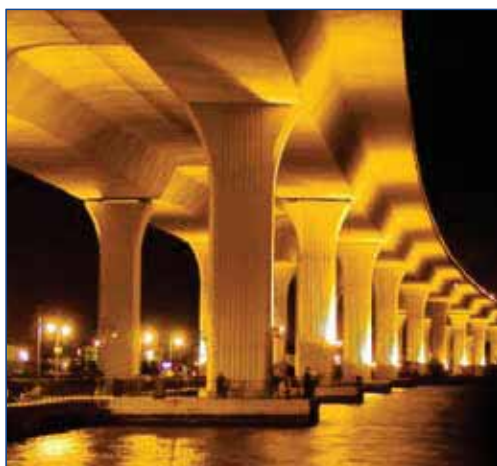
## Applications

Sign boards  
Industrial areas  
Construction sites  
Monuments & Facade

## Technical Details

Ordering Code	Lamp Type	Nominal Voltage (V)	Mains Current (A)	Lamp Socket	Power Factor	Capacitor Value
LHFM04170D36	1x70W MH DE	240	0.40	Rx7s	≥0.85	10 mfd
LHFM04115D36	1x150W MH DE	240	0.82	Rx7s	≥0.85	20 mfd

Also suitable for 70/ 150W HPS double ended lamps .



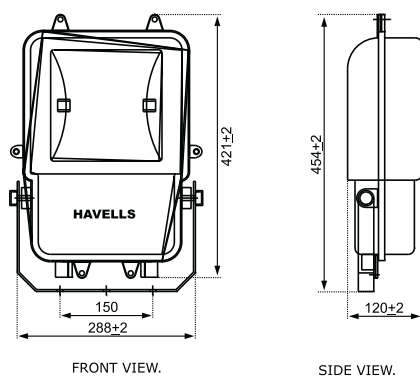
## Jeta 4



Integral wide beam long throw compact flood light luminaire suitable for 250W Metal Halide double ended lamp with Rx7s socket.

## Dimensions (in mm)

## Dimensions (in mm)



## Specification

## Housing

Pressure die-cast aluminium alloy LM24 with IP65 protection.

## Cover

Tempered protective toughened glass, 5mm thick, thermal shock and impact resistant.

## Finish

Epoxy grey powder coated after phosphochromate treatment.

## Optics

Reflectors made of high purity pre-anodised dimpled aluminium sheet for wide beam. Available in Assymmetric version.

## Lamp Holder

In ceramics with silver plated contacts.

## Electric Gear

Pre wired with power factor improvement capacitor and super imposed ignitor for reliable ignition upto terminal block, copper wound ferromagnetic ballast supplied separately be wired as per instruction.

## Mounting

Surface mounting using built in heavy duty bracket.

## Applications

Security areas  
Bill board areas  
Sports complexes  
Monument & Facade

## Technical Details

Ordering Code	Lamp Type	Nominal Voltage (V)	Mains Current (A)	Lamp Socket	Power Factor	Capacitor Value
LHFM05125D36	1x250W MH DE	240	1.32	Rx7s	≥0.85	33 mfd

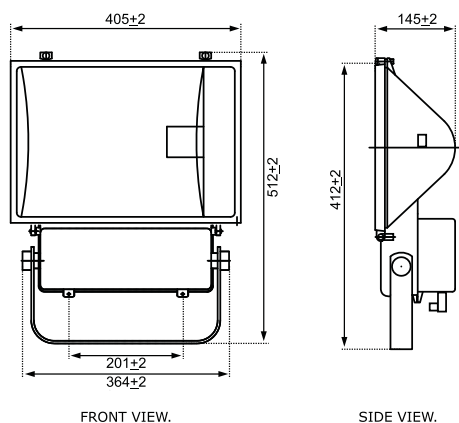


## Jeta 6 RO



Integral wide beam long throw flood light luminaire suitable for single tubular 250W/ 400W High Pressure Sodium/ Metal Halide lamp.

## Dimensions (in mm)



## Specification

## Housing

Pressure die-cast aluminium alloy LM24 with dual compartment for better heat dissipation.

## Cover

Tempered protective toughened front glass with thermal shock resistance and impact resistance, fixed with 2 nos. SS screws for in-position lamp replacement.

## Finish

Epoxy grey powder coated after phosphochromate treatment.

## Optics

Reflectors made of high purity pre-anodised dimpled aluminium sheet for wide beam.

## Lamp Holder

In ceramics with silver plated contacts E-40 lamp holder.

## Electric Gear

Pre wired with power factor improvement capacitor and super imposed ignitor for reliable ignition upto terminal block, copper wound ferromagnetic ballast supplied separately be wired as per instruction.

## Mounting

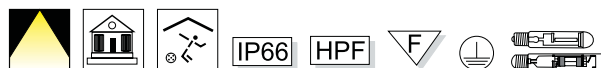
Surface mounting using built in heavy duty bracket.

## Applications

Sign boards  
Security areas  
Airport aprons  
High mast towers  
Construction sites  
Sports complexes

## Technical Details

Ordering Code	Lamp Type	Nominal Voltage (V)	Mains Current (A)	Lamp Socket	Power Factor	Capacitor Value
LH FY37125C36	1x250W SON/MH SET	240	1.32	E40	≥0.85	33 mfd
LH FY37140C36	1x400W SON/MH SET	240	2.20	E40	≥0.85	42 mfd

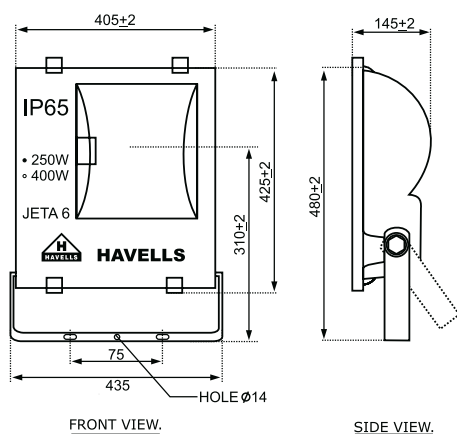


## Jeta 6 New



Integral wide beam long throw flood light luminaire suitable for single tubular 250W/ 400W High Pressure Sodium/ Metal Halide lamp.

## Dimensions (in mm)



## Specification

## Housing

Pressure die-cast aluminium alloy LM24 with IP65 protection.

## Cover

Tempered protective toughened front glass, 5mm thick, thermal shock and impact resistant, fixed with quick release hinge-clips for in-position lamp replacement.

## Finish

Epoxy grey powder coated after phosphochromate treatment.

## Optics

Reflectors made of high purity pre-anodised dimpled aluminium sheet for wide beam. Available in Assymmetric version.

## Lamp Holder

In ceramics with silver plated contacts.

## Electric Gear

Pre wired with power factor improvement capacitor and super imposed ignitor for reliable ignition upto terminal block, copper wound ferromagnetic ballast supplied separately be wired as per instruction.

## Mounting

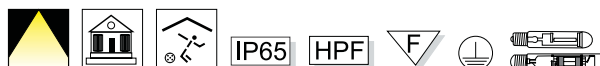
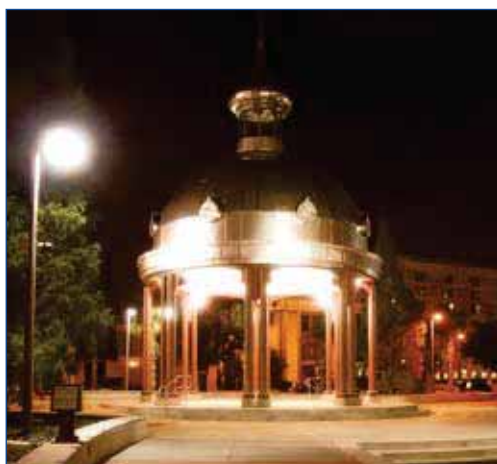
Surface mounting using built in heavy duty bracket.

## Applications

Sign boards  
Security areas  
Airport aprons  
High mast towers  
Construction sites  
Sports complexes

## Technical Details

Ordering Code	Lamp Type	Nominal Voltage (V)	Mains Current (A)	Lamp Socket	Power Factor	Capacitor Value
LHIFY36125C36	1x250W SON/MH SET	240	1.32	E40	≥0.85	33 mfd
LHIFY36140C36	1x400W SON/MH SET	240	2.20	E40	≥0.85	42 mfd

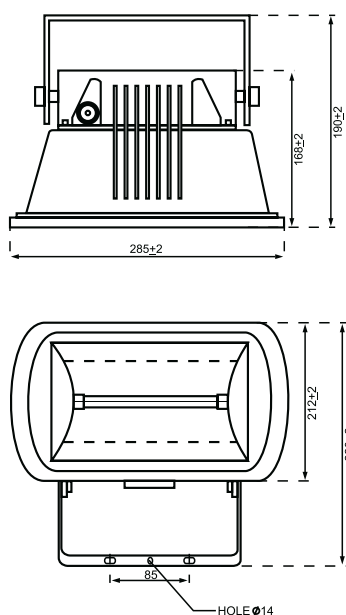


## Jeta 7



Integral compact wide beam flood light luminaire suitable for 70W/150W Metal Halide double ended lamps. Also suitable for 70W single ended Sodium Vapour/ Metal Halide lamp.

## Dimensions (in mm)



## Specification

## Housing

Pressure die-cast aluminium alloy LM24 with IP65 protection.

## Cover

Tempered protective toughened front glass, 5mm thick, thermal shock and impact resistant well shielded by cast aluminium frame.

## Finish

Epoxy grey powder coated after phosphochromate treatment.

## Optics

Reflectors made of high purity dimpled/peened pre-anodised aluminium sheet for wide beam. Luminaire available only in Assymmetric option.

## Lamp Holder

In ceramics with silver plated electrical contacts.

## Electric Gear

Pre wired with power factor improvement capacitor and super imposed ignitor for reliable ignition upto terminal block, copper wound ferromagnetic ballast supplied separately be wired as per instruction.

## Mounting

Bracket mounting with locking hole position at bottom.

## Applications

Sign boards  
Parking areas  
Industrial areas  
Construction sites  
Pedestrian crossings

## Technical Details

Ordering Code	Lamp Type	Nominal Voltage (V)	Mains Current (A)	Lamp Socket	Power Factor	Capacitor Value
LHFM40170D36	1x70W MH DE	240	0.40	Rx7s	≥0.85	10 mfd
LHFM41170C36*	1x70W SON/MH SEE	240	0.40	E27	≥0.85	10 mfd
LHFM40115D36	1x150W MH DE	240	0.82	Rx7s	≥0.85	20 mfd

\* Also available for 150W MH SEE (E27) lamp on request.

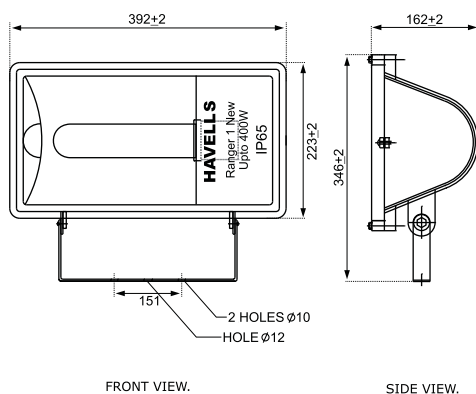


## Ranger 1 New NI



Non Integral wide beam long throw flood light luminaire suitable for single tubular High Pressure SV/MH lamp upto 400W.

## Dimensions (in mm)



## Specification

## Housing

Pressure die-cast aluminium alloy LM24 with IP65 protection.

## Cover

Tempered protective toughened front glass, 5mm thick, thermal shock and impact resistant. Fixed to the frame by silicon sealant & to the housing by 2 nos. SS toggles.

## Finish

Epoxy grey powder coated after phosphochromate treatment.

## Optics

Reflectors made of high purity dimpled/ peened pre-anodised specular aluminium sheet.

## Lamp Holder

In ceramics with silver plated contacts.

## Electric Gear

Select appropriate control gear as per selected lamp source & wattage.

## Mounting

Surface mounting using provided bracket with locking holes.

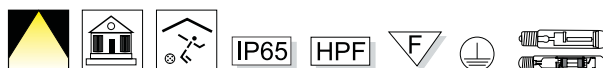
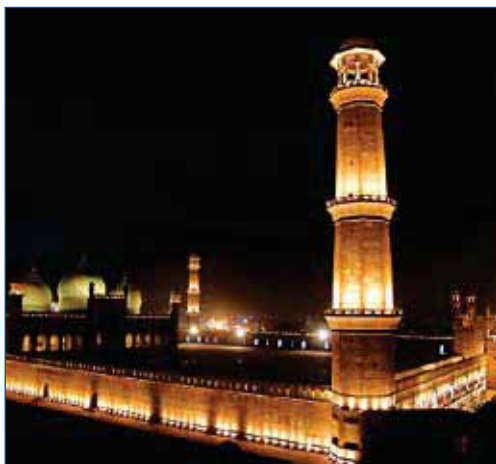
## Applications

Area lighting  
High mast towers  
Marshalling yards  
Switch yard stations  
Facade & monuments

## Technical Details

Ordering Code	Lamp Type	Nominal Voltage (V)	Mains Current(A)	Lamp Socket	Power Factor	Capacitor Value*
LHFY46140099	1x250W SON/MH SET	240	1.32	E40	≥0.85	33 mfd
	1x400W SON/MH SET	240	2.20	E40	≥0.85	42 mfd

\*When used with appropriate rating CG box.

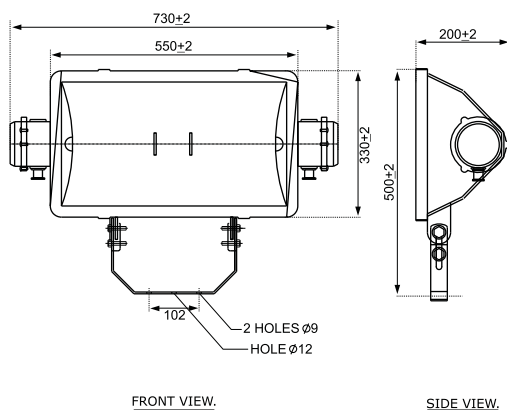


## Ranger 2 NI



Non Integral wide beam long throw flood light luminaire suitable for twin tubular High Pressure SV/MH lamps upto 400W.

## Dimensions (in mm)



## Specification

## Housing

Die-cast aluminium alloy LM6 with IP65 protection.

## Cover

Tempered protective toughened front glass, 5mm thick, thermal shock and impact resistant. Sealed from front side with silicon sealant & held to the housing by 4 nos. SS toggles.

## Finish

Epoxy grey powder coated after phosphochromate treatment.

## Optics

Reflectors made of high purity dimpled/ peened center reflector & pre-anodised specular side reflectors.

## Lamp Holder

In ceramics with silver plated contacts, re-lamping from side.

## Electric Gear

Select appropriate control gear as per selected lamp source & wattage.

## Mounting

Surface mounting using built in heavy duty bracket with locking holes.

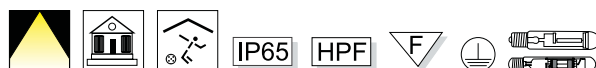
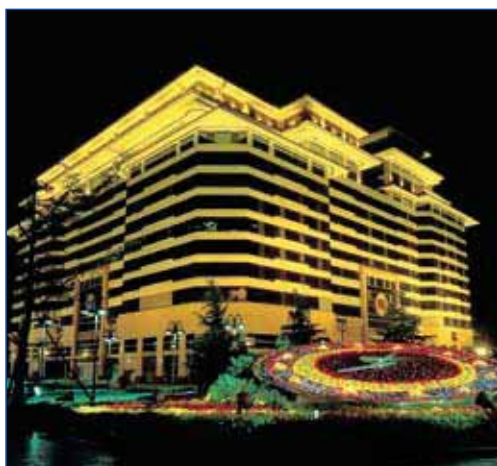
## Applications

Area lighting  
High mast towers  
Marshalling yards  
Switch yard stations  
Facade & monuments

## Technical Details

Ordering Code	Lamp Type	Nominal Voltage (V)	Mains Current(A)	Lamp Socket	Power Factor	Capacitor Value*
LHFY05240099	2x250W SON/MH SET	240	2.64	E40	≥0.85	2x33 mfd
	2x400W SON/MH SET	240	4.40	E40	≥0.85	2x42 mfd

\*When used with appropriate rating CG box.

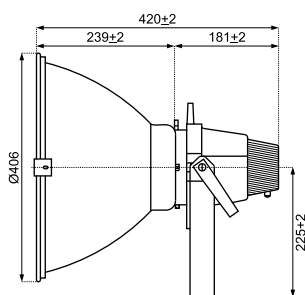


## Alfa 3 NI



Symmetric Non-integral flood light luminaire suitable for single elliptical or tubular High Pressure Sodium/ Mercury or Metal Halide lamp upto 400W.

## Dimensions (in mm)



Alfa 3 NI  
Toggles - 3 Nos.

## Specification

## Housing

Pressure die-cast aluminium alloy LM24 with IP65 protection.

## Cover

Tempered and toughened protective front glass, 5mm thick, thermal shock & impact resistant. Fixed to the housing by 3 nos. SS toggles.

## Reflector

Reflector made up of spun aluminium, electrochemically brightened & anodised.

## Finish

Housing is epoxy powder coated grey after phosphochromate treatment.

## Lamp holder

In ceramics & silver plated contacts, re-lamping from front.

## Electric Gear

Select appropriate control gear as per selected lamp source & wattage.

## Mounting

Wall/surface mounting using the mounting bracket with locking holes.

## Applications

Stadiums  
Storage yards  
Security areas  
High mast towers  
Monument & Facade

## Technical Details

Ordering Code**	Lamp Type	Nominal Voltage (V)	Mains Current(A)	Lamp Socket	Power Factor	Capacitor Value
LHFZ07140399 LHFZ08140199 LHFZ08140299	upto 1x400W SON/MH	240	2.20	E40	≥0.85	42 mfd

\*When used with appropriate rating CG box.

\*\*Ordering code from LHFZ07140399 (Housing), LHFZ08140199 (Reflector) & LHFZ08140299 (Glass) please order all three codes for complete fitting.

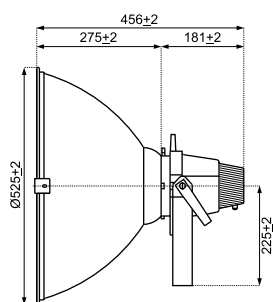


## Alfa 2 New NI



Symmetric Non-integral flood light luminaire suitable for single elliptical or tubular High Pressure Sodium/ Mercury or Metal Halide lamp upto 600W.

## Dimensions (in mm)



FRONT VIEW

Alfa 2 New NI  
Toggles - 5 Nos.

## Specification

## Housing

Pressure die-cast aluminium alloy LM24 with IP65 protection.

## Cover

Tempered and toughened protective front glass, 5mm thick, thermal shock & impact resistant. Fixed to the housing by 5 nos. SS toggles.

## Reflector

Reflector made up of spun aluminium, electrochemically brightened & anodised.

## Finish

Housing is epoxy powder coated grey after phosphochromate treatment.

## Lamp holder

In ceramics & silver plated contacts, re-lamping from front.

## Electric Gear

Select appropriate control gear as per selected lamp source & wattage.

## Mounting

Wall/surface mounting using the mounting bracket with locking holes.

## Applications

Stadiums  
Storage yards  
Security areas  
High mast towers  
Monument & Facade  
Navy pier/ Jetty/ Airport aprons

## Technical Details

Ordering Code**	Lamp Type	Nominal Voltage (V)	Mains Current(A)	Lamp Socket	Power Factor	Capacitor Value
LHFZ07140399 LHFZ07140199 LHFZ07140299	upto 1x600W SON/MH	240	3.50	E40	≥0.85	2x33 mfd

\*When used with appropriate rating CG box.

\*\*Ordering code from LHFZ07140399 (Housing), LHFZ07140199 (Reflector) & LHFZ07140299 (Glass)  
please order all three codes for complete fitting.



IP65

HPF

F

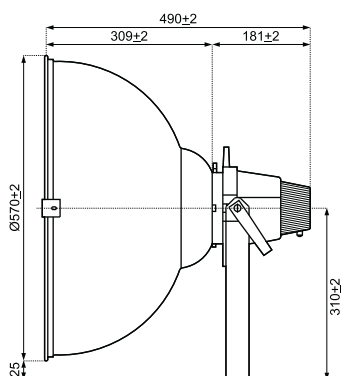


## Alfa 2 NI



Symmetric Non-integral flood light luminaire suitable for single elliptical or tubular High Pressure Sodium/ Mercury or Metal Halide lamp upto 1000W.

## Dimensions (in mm)



SIDE VIEW

Alfa 2 NI  
Toggles - 6 Nos.

## Specification

## Housing

Pressure die-cast aluminium alloy LM24 with IP65 protection.

## Cover

Tempered and toughened protective front glass, 5mm thick, thermal shock & impact resistant. Fixed to the housing by 6 nos. SS toggles.

## Reflector

Reflector made up of spun aluminium, electrochemically brightened & anodised.

## Finish

Housing is epoxy powder coated grey after phosphochromate treatment.

## Lamp holder

In ceramics & silver plated contacts, re-lamping from front.

## Electric Gear

Select appropriate control gear as per selected lamp source & wattage.

## Mounting

Wall/surface mounting using the mounting bracket with locking holes.

## Applications

Stadiums  
Storage yards  
Security areas  
High mast towers  
Monument & Facade  
Navy pier/ Jetty/ Airport aprons

## Technical Details

Ordering Code	Lamp Type	Nominal Voltage (V)	Mains Current(A)	Lamp Socket	Power Factor	Capacitor Value*
LHFZ07140099	upto 1x1000W SON/MH	240	4.80	E40	≥0.85	2x42 mfd

\*When used with appropriate rating CG box.

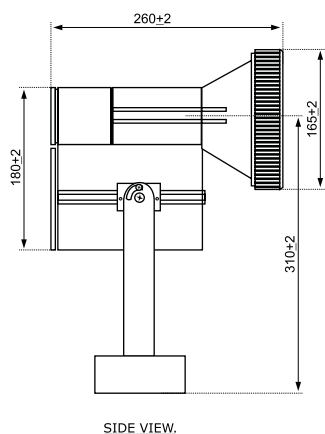


## Focal 1



Exclusively designed narrow beam ultra compact integral flood light suitable for single MH SEQ/ CDM-T lamp upto 150 W.

## Dimensions (in mm)



SIDE VIEW.

## Specification

## Housing

Pressure Die-cast aluminium alloy LM24 in IP66 protection.

## Cover

Tempered protective toughened front glass, 5mm thick, thermal shock and impact resistant.

## Finish

Epoxy black powder coated after phosphochromate treatment.

## Optics

Reflector made of deep drawn, virgin polished and anodized aluminium faceted sheet. Optics is designed for specific application to achieve very narrow beam pattern varying from 5° to 10° degrees.

## Lamp Holder

In ceramics with silver plated contacts.

## Electric Gear

Wired with flexible silicon wire using copper wound ferromagnetic ballast, power factor improvement capacitor and super imposed ignitor for reliable ignition upto terminal block.

## Mounting

Surface mounting using built in heavy duty bracket with aiming & locking facility.

## Applications

Tall structures  
Accent lighting  
Distant spot lights  
Architectural facades  
Boarder security areas

## Technical Details

Ordering Code	Lamp Type	Nominal Voltage (V)	Mains Current(A)	Lamp Socket	Power Factor	Capacitor Value
LHFM15170C36	1x70W MH SEQ/CDM-T	240	0.40	G12	≥0.85	10 mfd
LHFM15115C36	1x150W MH SEQ/CDM-T	240	0.82	G12	≥0.85	20 mfd

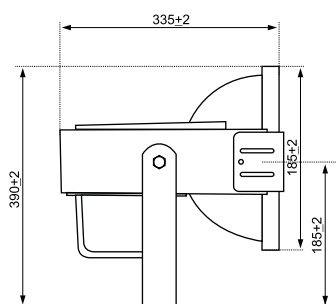


## Focal 2



Precisely designed narrow beam integral flood light luminaire suitable for single tubular clear 250W High Pressure Sodium Vapour/ Metal Halide lamp.

## Dimensions (in mm)



SIDE VIEW.

## Specification

## Housing

Pressure die-cast aluminium alloy LM24 in IP65 protection.

## Cover

Tempered protective toughened front glass, 5mm thick, thermal shock and impact resistant. Option of convex lense available.

## Finish

Epoxy black powder coated after phosphochromate treatment.

## Optics

Reflector made of deep drawn virgin polished and anodized facetted aluminium sheet.

## Lamp Holder

In ceramics with silver plated contacts.

## Electric Gear

Pre wired with power factor improvement capacitor and super imposed ignitor for reliable ignition upto terminal block, copper wound ferromagnetic ballast supplied separately be wired as per instruction.

## Mounting

Surface mounting using built in heavy duty bracket with locking holes.

## Applications

Monuments  
Sports grounds  
Building facades  
High mast towers  
Airports & harbours  
Railway marshalling yards

## Technical Details

Ordering Code	Lamp Type	Nominal Voltage (V)	Mains Current(A)	Lamp Socket	Power Factor	Capacitor Value
LHFY50115C36	1x150W SON-T	240	0.82	E40	≥0.85	20 mfd
LHFY50125C36	1x250W SON/MH SET	240	1.32	E40	≥0.85	33 mfd

